

Wolf, Shin

05/13/3132

FILING NOTES:

FIELD RESEARCH
S100, S151

02/19/3132

THOUGHT CONTROL
C251, C002

CERTIFIED

IMAGE ACQUISITION
G233, G242, G124

04/04/3132

CORRECTION ENFORCEMENT
L144, L215

APPROVED

FILING
D327 05/13/3132

Record No
FE-086-PE

©2003 WizKids, LLC. All rights reserved. 'Mech and BattleMech are trademarks of WizKids, LLC.



NAME: SHIN WOLF

Record No
FE-086-01



FACTION: Steel Wolves
REGIMENT: Wolf Lancers
MECH: Uller

DOB: 03/02/3104
HAIR: Black
EYES: Brown

Like all members of the Wolf Lancers, Shin was not born into Clan Wolf, but instead hails from the Periphery realm known as the Taurian Concordat. Records suggest that Shin, whose original surname is believed to be Jurgens, received his formal training as a MechWarrior in the Concordat, where - like many Taurian MechWarriors - he was indoctrinated with a paranoid fear of the "evil" House Davion. Then one day, after a debate with an elderly local in a bar on Carmichael, the realization that his nation suffered from a profound inferiority

complex struck him like a runaway maglev.

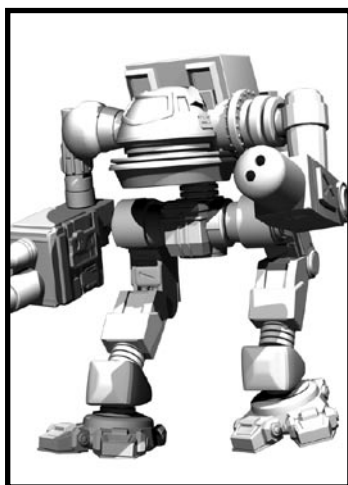
Record No
FE-086-01

Disillusioned, Shin became a drifter, turning up only two years ago in The Republic, where he became enamored with the clear-as-glass mentality of the Clans in general, and the Wolves in particular.

Shin fought in a successful Trial of Position to become a member of the Wolf Lancers to the wonderment of the Clan warriors, who did not expect a "mere Spheroid" to actually outperform a Trueborn Wolf in single combat. Nonetheless, Shin had fought and won, and had earned the right to command a Star in the Lancers. He was assigned to a light *Uller* BattleMech and charged with upholding the honor of his new Clan.

MECH: ULLER

Record No
FE-086-02



Serial Number: JF589-31G
Mass: 30 tons
Chassis: Olivetti S2 Endo Steel
Power Plant: 180GM Extralight
Cruising Speed: 64 kph
Maximum Speed: 97 kph
Jump Jets: None
Armor: Compound Alpha Ferro-Fibrous
Armament:
1 Poland Main Model A Gauss Cannon
2 Series 14a Medium Lasers

Commentary

Record No
FE-086-02

The *Uller* BattleMech was one of the primary light 'Mechs of Clan Jade Falcon, whose invasion of the Inner Sphere repeatedly proved this design's worth in engagements with heavier medium 'Mechs common to the Federated Commonwealth armed forces. Though light 'Mechs often have short life expectancies on the battlefield, JF589-31G actually appears to have been in service since the dawn of the Clan invasion itself, and fought in historic clashes including Twycross, Tukayyid, and Morges, though with a different warrior at the helm each time. It eventually fell during the FedCom Civil War, when Lyran forces, under the command of General Adam Steiner, led a courageous attack on the Falcons to secure the Lyran state's border with the Clan. Captured by Lyran troops, JF589-31G found its way into the regular forces of the LAAF, and was among many 'Mechs lost in the fight for Hesperus II during the Jihad. The Republic claimed the 'Mech from the scrapyards during its formation, and rebuilt it using a mix of Clan and Inner Sphere technology. Its current owner, Shin Wolf, has named it "Pride" to commemorate his acceptance into Clan Wolf.